



GAT MONTHLY MEMBERSHIP PROGRESS REPORT

Results as of: 5/31/2024

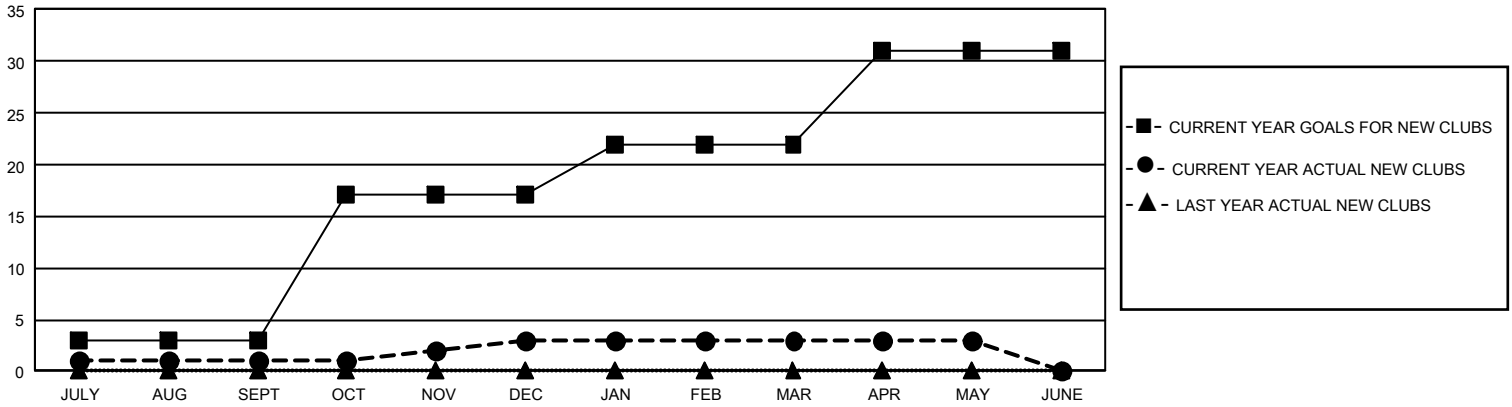
GMT Constitutional Area 1, Group E

REPORT DOES NOT INCLUDE CLUBS IN UNDISTRICTED AREAS.

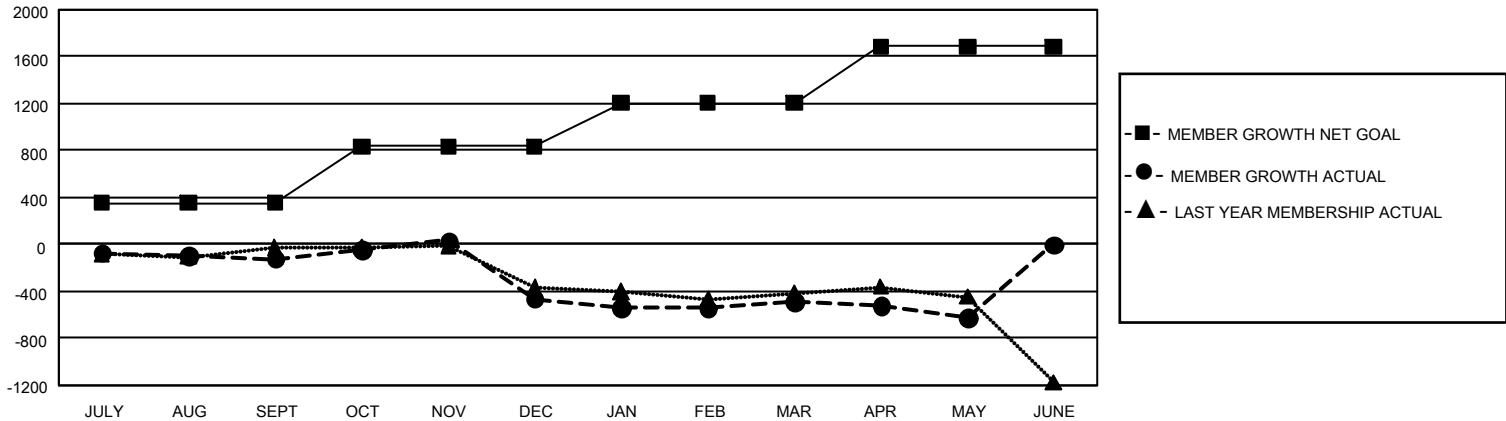
Clubs			
RESULTS FOR 2023-2024			
QUARTER	NEW CLUB GOAL	NEW CLUBS	DROPPED CLUBS
JULY/AUG/SEPT	9	1	8
OCT/NOV/DEC	42	2	22
JAN/FEB/MAR	15	0	5
APR/MAY/JUNE	27	0	2

Members			
RESULTS FOR 2023-2024			
QUARTER	MEMBER GROWTH NET GOAL	MEMBER GROWTH ACTUAL	DROPPED MEMBERS ACTUAL (including transfers)
JULY/AUG/SEPT	354	977	1,023
OCT/NOV/DEC	481	862	1,139
JAN/FEB/MAR	372	818	747
APR/MAY/JUNE	479	484	540

GOALS AND ACTUAL NEW CLUBS CUMULATIVE



GOALS AND ACTUAL MEMBERS CUMULATIVE



DROPPED CLUBS: 37	743 CLUBS OF 1,320 ADDED 1 OR MORE NEW MEMBERS	<u>GENDER DISTRIBUTION</u>	
		MALE	22,997 (67.22%)
<u>DROPPED MEMBERS</u>		FEMALE	11,188 (32.70%)
		NON BINARY	1 (0.00%)
DECEASED	541	PREFER NOT TO ANSWER	25 (0.07%)
CLUB CANCELLED	253	TOTAL FAMILY UNIT MEMBERS 6,527	
OTHER	2,650	FAMILY MEMBERS PAYING HALF DUES 3,363	
TOTAL	3,444		

[CLICK HERE FOR CUMULATIVE MEMBERSHIP DATA](#)